



**PIPETECH**  
ENGINEERING SOLUTION PVT. LTD.

ISO 9001:2015 Certified

# Celebrating **9** years

Delivering success  
for our Clients  
2013-2022

BROCHURE  
**2022**

**+9 YEARS OF EXCELLENCE**

**270+ EMPLOYEES GLOBALLY**

**GROWTH RATE OF 240%**

**AWARD WINNING ENGINEERING SERVICES**

**RECOGNISE BY TOP EPC COMPANIES WORLDWIDE**

**WORLD CLASS TRAINING FOR OUR EMPLOYEES**

**PREFERRED WORKSHARE SERVICE PROVIDER**

**COMPLETE DATA SECURITY POLICY FOR ALL CLIENTS**

**RENOWNED DESIGN CONSULTANT IN UNITED KINGDOM & EUROPE**

**ONLY ENGINEERING CONSULTANT WITH CLEAN ENERGY SOLUTIONS IN INDIA**

**SUCCESSFULLY DELIVERED CARBON CAPTURE & STORAGE  
WITH HYDROGEN GENERATION PLANTS**

## **WE WORK UNIQUELY & EFFICIENTLY**

- ★ **100% QUALITY OF WORK**
- ★ **TIMELY DELIVERY**
- ★ **CORRECT RESULTS AT THE FIRST ATTEMPT FOR ALL ACTIVITIES**

# ABOUT US

*“Pipetech Engineering Solution Pvt. Ltd. was established in the year 2013, in Mumbai. Today we have presence in all the major locations across the world.*

*This was made possible by strict adherence to Quality Management Systems & International Codes & Standards.*

*We create value for our clients in India, UK, Europe & rest Of the world by delivering world-class Engineering and Manpower Outsourcing Services. Our dynamic approach to problem solving enables us to deliver quality services linked with consistent performance to our clients.*

*Many of our clients across sectors have retained us as their Preferred Service Provider since the past seven years. We Offer services across disciplines such as “Piping, Mechanical, Process, Civil, Electrical, Instrumentation & Control and Information Technology.” We are now completely operational in London under the name- Pipetech Engineering Solution UK Limited.”*

# OUR SECTORS

- **REFINERIES**
- **OIL & GAS**
- **LNG, PORTS AND TERMINAL**
- **PETROCHEMICAL**
- **SHIP DESIGN**
- **FERTILIZERS**
- **CARBON CAPTURE & STORAGE**
- **MARINE ENGINEERING**
- **HVAC**
- **HYDROGEN GENERATION**
- **MINES AND MINERALS**
- **CLEAN ENERGY**
- **SOLAR POWER**
- **PHARMACEUTICALS**
- **DENTAL AND MEDICAL EQUIPMENTS & SERVICES**
- **WATER TREATMENT**
- **PAINTS & POLYMERS**
- **NUCLEAR POWER**
- **RESEARCH & DEVELOPMENT**
- **RAILWAYS & INFRASTRUCTURE**

# OUR SERVICES

## Reverse Engineering Capabilities

- Innovative 3D Laser Scan Technologies
- Products from Faro, Z&F, Leica etc.
- Use of Sophisticated 3D Tools
- Point cloud to Bubble view representations
- Conversion to Intelligent 3D Model
- 2D Documentation.

## As-Built Engineering

- Manual Tracing & Sketching at Site
- User level CAD Works Updates
- Data Management
- 2D Drafting with high Accuracy
- Piping, Mechanical, Civil & Structures, Electrical & Instrumentation, Architectures, Public Health, Safety, MEP, RC, Lightening, O&M, VSS, NPN etc.

## Softwares we use of



## Detailed Design Engineering

- Disciplines : Piping, Mechanical, Civil & Structures, Electrical & Instrumentation
- Innovative Piping Design Services
- Expert in Static/Rotary Equipment Design
- Civil & Structures, Concrete design, Rebar & RC Detailing under one roof
- Plant Electrical Engineering Design
- Plant Instrumentation Design using Automation
- World Class Integration Facilities

## 2D Solutions

- Preparation of 2D Drawings irrespective of Disciplines
- Digitization of Engineering Documents
- Use of AutoCAD/Microstation tools
- Quality Checking as per in-house/Clients standards

## 3D Modeling

- All-in-one Intelligent modelling services PDS/PDMS/Aveva E3D/SP3D/AutoPLANT/Plant 3D/Cadmatic/SSPipe/Revit/BIM/AECOSim/AutoCAD/ProjectWISE/Sharepoint tools/Micro Station/OpenRail/OpenBuildings/Prodok/Inventor/Ansys/Caesar-II/AutoPipe/Pipenet/Tekla/Staad-pro/Civil 3D/CADS RC, etc.
- Sophisticated Administration Services
- PDS to SP3D Conversions & vice-versa
- PDS to PDMS Conversions & vice-versa
- Time saving Catalogue or Library Creation

## Analysis/Optimization Services

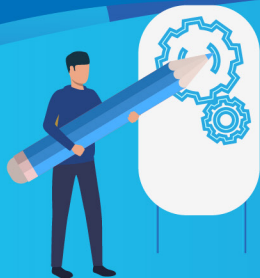
- Pipe Stress Analysis Using CAESAR-II & Auto Pipe
- Surge analysis using Pipenet
- FEA by Ansys or Abacus
- Structural Analysis using Staad-Pro
- Optimization of Assets/Plants
- Static And Dynamic Analysis

## Process Engineering

- Preparation of Conceptual Layout
- FEED (Front End Engineering Design) and Detail Design Work
- Hydraulic Calculation Report
- Line Sizing, Pressure Drop Calculations, Safety Valve Sizing, HAZOP, HAZID, etc
- Preparation of PFD's, P&ID's and UFD'S
- Adequacy Check and Calculation Report
- Process Simulation and Optimization using AspenTech tools

## Miscellaneous Services

- Manpower Outsourcing to the Industry
- Payroll Management
- Project Management Consultancy
- Procurement Assistance
- Plant Design Services in case of 'Solar Thermal Power Plant'
- PV Solar Plant EPC
- Responsibility of AMC to Clients
- Special Services in Pipeline Engineering
- Dental and Medical Equipment & Services



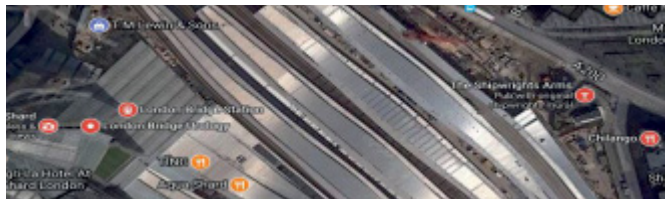
# ONGOING PROJECTS

- **Engineering Service Consultancy – VI Of Integrated Nuclear Recycle Plant, Tarapur**

Owner: Bhabha Atomic Research Center (BARC)  
Scope: Multi-disciplinary Engineering Consultancy : services for 18 blocks of NRP, Tarapur  
Location: Mumbai, India  
Software: SSIPIE, Cadmatic, AutoPIPE  
Man Hours: 1,80,000 during 18 months

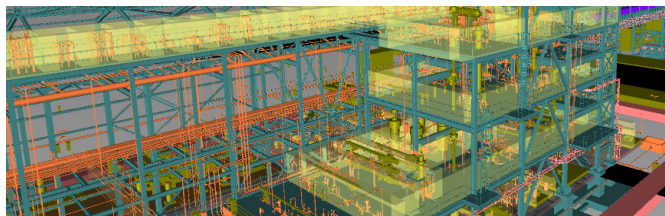
- **As built Documentation of London Bridge Station**

Owner: Network Rail  
EPC: Costain Oil, Gas and Power Limited  
Package: Architecture, Civil & Structures, Mechanical, Electrical and Public Health drawings  
Location: London, UK  
Software: AECOSim, ProjectWISE  
Man Hours: 28000+



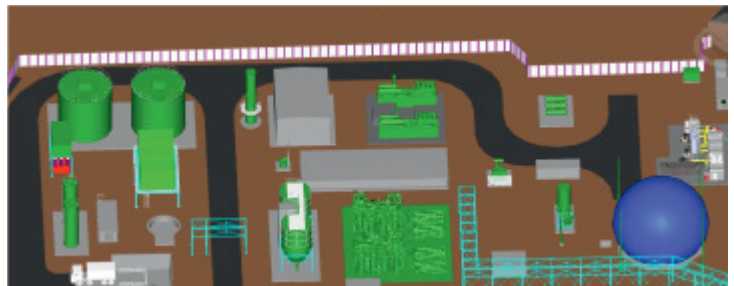
- **IndResidH 850 Kg/hr Slurry Resid Hydro Cracking Unit**

Owner : Indian Oil Corporation Limited (IOCL)  
EPC : L&T Hydrocarbon Engineering Limited (LTHE)  
Scope : Piping Design, 3D PDMS Modelling of Piping , Electrical, Instrumentation, HVAC, Fire Fighting Elements , Insertion of TEKLA Model from Civil and Structures , Piping stress Analysis and As-Built Engineering  
Location : IOCL Panipat Refinery, India  
Software : Aveva PDMS, CAESAR-II  
Man Hours : 15,000



- **Savern Trent Water Treatment Facilities**

Owner : Savern Trent UK  
EPC: Costain Oil, Gas & Process Ltd., UK  
Scope: 3D Design of Water Treatment Facilities Within UK Such as Swalecliff, Finham Projects  
Location: UK & India



- **Essar Mogas Export Project**

Owner: Essar Energy LTD (Shell)  
EPC: Costain Oil, Gas & Process Ltd., UK  
Scope: Piping, Civil, Design, 3D Modeling with 2D Drafting of Basic & Detailed, Design phase  
Location : Manchester, UK  
Software : Aveva E3D, STAAD-pro, AutoCAD  
Man Hours: 18,000

- **Boysun Gas Processing Plant (BGPP)**

Owner : Government of Uzbekistan  
EPC : Enter Engineering, Uzbekistan  
Scope : Piping stress Analysis, Structural Support design, Flow Induced Vibrations/Acoustic Induced vibrations (FIV/AIV) and Procurement Support For Piping Speciality Items.  
Location : Uzbekistan , Software : CAESAR-II  
Man Hours : 35,000

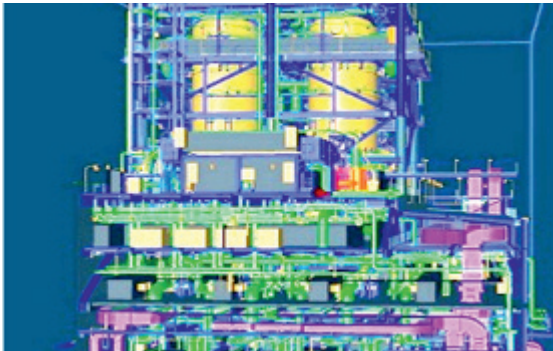
- **Adequate Study of Existing HP and MP Steam, Feed Water, Cooling Water Header of Thermal Power Station and Stress Analysis of HP, MP and FW Header for Capacity Enhancement of Boilers at IOCL, Haldia**

Owner: Indian Oil Corporation Limited (IOCL)  
Duration: 3 months , Location: Haldia, India  
Software – CAESAR-II, AutoCAD  
Man Months – 8+

# COMPLETED PROJECTS

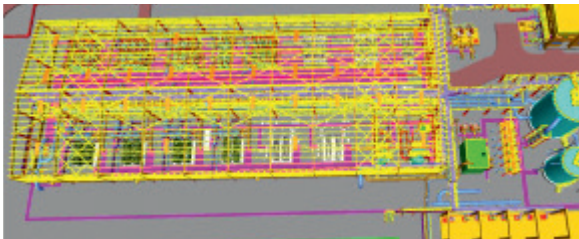
- **Yamal LNG**

Owner : Novatek, Total, CNPC EPC - AHIC, Sharjah ,  
Capacity : 16.5MTPA of Gas Condensates  
Module : MR1/MR3/MR4  
Location : Yamal peninsula, Russia  
Software : PDMS , Man Hours- 85,000  
Completed Year: 2017



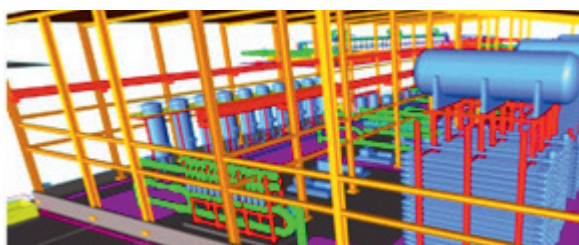
- **J3MM Expansion Program**

Owner : Reliance Industries Limited  
EPC : VA Tech Wabag  
Package : SWRO-PT/UF/RO@3000cu.m/hr  
Location : Jamnagar, India , Software :PDS  
Man Hours :17,500 , Completed Year: 2017



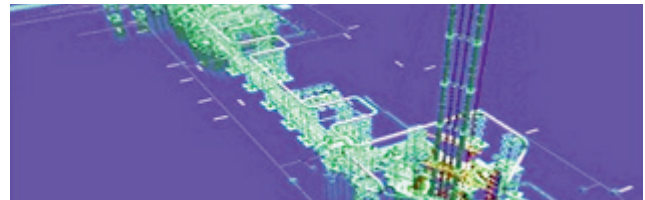
- **SWRO**

Owner : Reliance Industries Limited  
EPC: VaTech WABAG, Capacity - 1000 M3/hr  
Location: Jamnagar, India , Software: PDMS  
Man Hours : 10,500 , Completed Year - 2017



- **Gasification Project From Jamnagar 3**

Owner: Reliance Industries Limited  
EPC: Zeeco India Ltd.  
Package: Flare Package, Gasification DTA  
Location: Jamnagar, India , Software: PDS  
Man Hours : 7000 , Completed Year: 2015



- **Detail Engineering of Paint Manufacturing Complex**

Owner: Asian Paints Limited , EPC: Jacobs Engineering , Capacity: 1000KLPD  
Package: Water Based Paint Block + Admin Building  
Location: Mysore, India & Vaizag, India  
Software: PDMS , Man Hours: 45,000  
Completed Year: 2018



- **Caprolactum Distillation, Project, GSFC**

Owner : GSFC , EPC: Simon India Ltd.  
Capacity: 50000 MTPY , Location: India  
Software: Bentley AutoPlant  
Man Hours : 4,000 , Completed Year: 2016



- **DMCPU of IOCL Paradip**

Owner: GSFC , EPCL: Simon India Ltd.  
Capacity: 50000 MTPY , Location: India  
Software: Bentley AutoPlant  
Man Hours: 4,000 , Completed Year: 2016

# CLIENTELE



# PIPETECH ENGINEERING SOLUTION PVT. LTD.



## 📍 Global Head Office :

207, B-Wing, 2nd Floor, Udyog Bhavan-1, Ambarnath Industrial Park, Ambarnath(E), Thane, India. Pin Code – 421506

☎ +91 251 2621259/60 ☎ +91 9767851351 📞 +91 8888918912

✉ project@pipetech.in / ravikant@pipetech.in 🌐 www.pipetech.in

📘 @PipetechPESP 🌐 Pipetech Engineering Solution Pvt Ltd

## 📍 UK Office :

4, Wexham Road, Slough, London, United Kingdom, SL1 1UA

☎ + 44 7978388555 ☎ +44 7978295281

✉ sumedh@pesul.co.uk ✉ dayanand@pesul.co.uk

🌐 www.pesul.co.uk

## 📍 Delhi Branch Office

1036A 10th floor, B3  
Spaze IT park Sohna  
road Gurgaon  
Haryana 122018



📍 206, B-Wing, 2nd Floor, Udyog Bhavan-1, Ambarnath Industrial Park, Ambarnath(E), Thane, India. Pin Code – 421506

📞 9763720181 / 9763720182 / 9767107875

✉ enquiry@pipetech.in

🌐 www.pipetechinstitute.in

📘 Pipetech Institute Of Technology

**A Step Towards "Make In India"**

